

CAT | ACCESS EQUIPMENT

Product: SCAFFOLD | SELF - LOCK FRAME

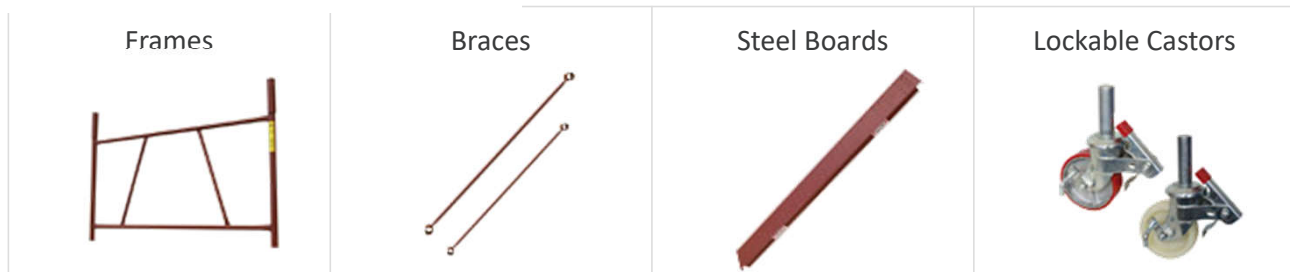


## STEEL SELF-LOCK SCAFFOLD

- Tubular steel scaffolding
- Simple to erect & dismantle
- Inexpensive alternative to aluminium scaffolding
- Available in 1.5m, 2.1m & 3m frame sizes
- Towers include: frames, base braces, safety rails, handrails, diagonals, lockable castors & platforms
- Optional extras: base jacks, access ladders, adjustable castors, trap-door platforms

TOWER (H)	FRAME SIZE AVAILABLE		
	1.5 m	2.1 m	3.0 m
4 m	SHD-4-1.5	SHD-4-2.1	SHD-4-3
5 m	SHD-5-1.5	SHD-5-2.1	SHD-5-3
6 m	SHD-6-1.5	SHD-6-2.1	SHD-6-3
8 m	SHD-8-1.5	SHD-8-2.1	SHD-8-3
10 m	N/A	SHD-10-2.1	SHD-10-3
12 m	N/A	N/A	SHD-12-3

### STANDARD COMPONENTS:



[www.retief-sales.com](http://www.retief-sales.com)

interiors | shop fitting | office fitting | shelving & racking | materials handling | display stands | bins & crates | notice boards | cupboards & cabinets | mezzanine floor | pallets | lockers architectural systems | screens & partitions  
promotion stands | scaffolding | metal bending | metal perforation | metal powder coating

CAT | ACCESS EQUIPMENT Product: SCAFFOLD | SELF - LOCK FRAME



## STEEL SELF-LOCK SCAFFOLD

### STANDARD COMPONENTS:

<p>Frames</p>	<p>Braces</p>	<p>Steel Boards</p>	<p>Lockable Castors</p>
---------------	---------------	---------------------	-------------------------

### OPTIONAL EXTRA COMPONENTS:

<p>Access Ladders</p>	<p>Adjustable Base Jacks</p>	<p>Trapdoor Platform</p>	<p>Toe-board Set</p>
<p>Contact our sales team to assist with the options you require</p> <p><a href="mailto:sales@shop-expo.com">sales@shop-expo.com</a></p>	<p>Adjustable Castor</p>	<p>Knee Brace</p>	<p>Refer to page 2 Popular tower assembly</p>

[www.retief-sales.com](http://www.retief-sales.com)

interiors | shop fitting | office fitting | shelving & racking | materials handling | display stands | bins & crates | notice boards | cupboards & cabinets | mezzanine floor | pallets | lockers architectural systems | screens & partitions promotion stands | scaffolding | metal bending | metal perforation | metal powder coating

CAT | ACCESS EQUIPMENT Product: SCAFFOLD | SELF - LOCK FRAME



## STEEL SELF-LOCK SCAFFOLD

### 1.5 M X 1.5 M BASE TOWER

TOWER HEIGHT	4M	5M	6M	8M
Frames	8	10	12	16
Tie Bars	4	4	4	4
Cross Braces	2	2	2	3
Steelboards	6	6	6	6
Castors	4	4	4	4
Base Jacks	4	4	4	4
Access Ladders	1	2	2	3
Toe-Board Set	1	1	1	1
Trapdoor	1	1	1	1
Knee-Brace	4	4	4	4

### 3.0 M X 3.0 M BASE TOWER

TOWER HEIGHT	8M	10M	12M	15M
Frames	16	20	24	30
Tie Bars	4	4	4	4
Cross Braces	3	3	4	4
Steelboards	12	12	12	12
Castors	4	4	4	4
Base Jacks	4	4	4	4
Access Ladders	3	4	5	7
Toe-Board Set	1	1	1	1
Trapdoor	1	1	1	1
Knee-Brace	4	4	4	4

### 2.1 M X 2.1 M BASE TOWER

TOWER HEIGHT	4M	5M	6M	8M	10M
Frames	8	10	12	16	20
Tie Bars	4	4	4	4	4
Cross Braces	2	2	2	3	3
Steelboards	9	9	9	9	9
Castors	4	4	4	4	4
Base Jacks	4	4	4	4	4
Access Ladders	1	2	3	4	4
Toe-Board Set	1	1	1	1	1
Trapdoor	1	1	1	1	1
Knee-Brace	4	4	4	4	4

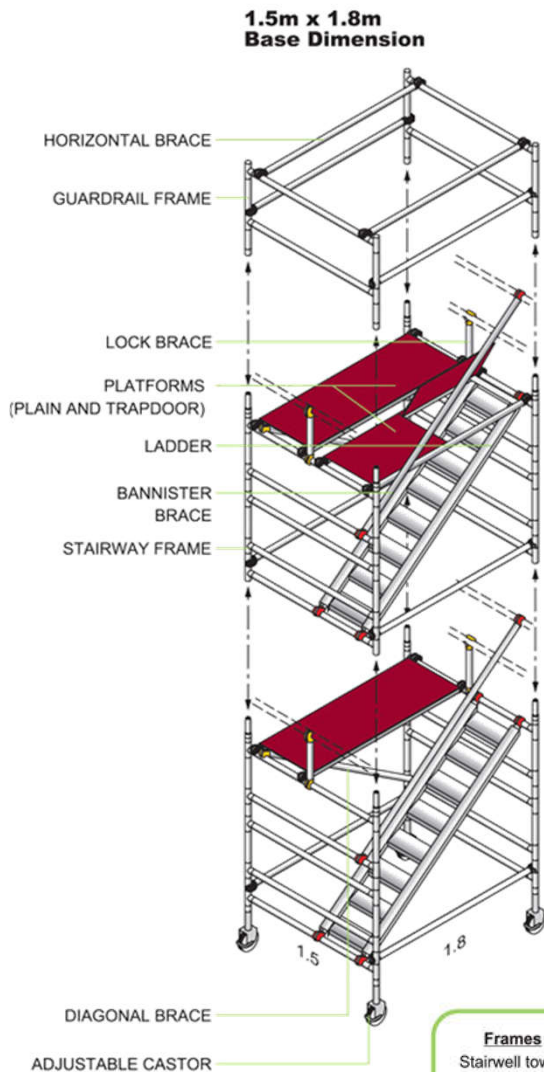
**NOTE:** Shaded components are optional. Our sales team will guide you on the options

[www.retief-sales.com](http://www.retief-sales.com)

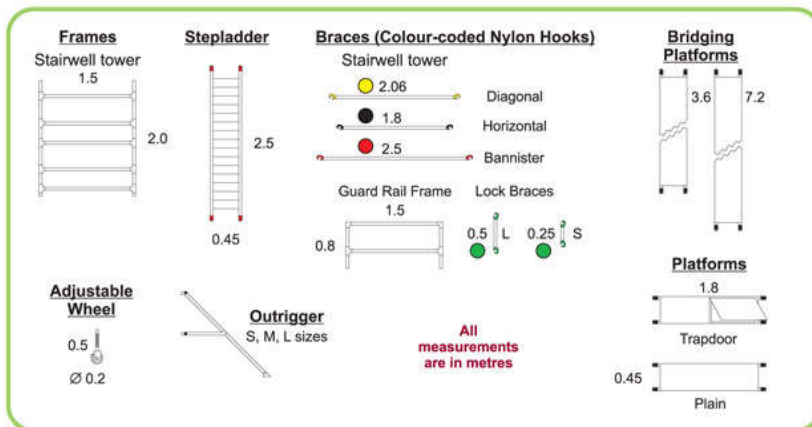
interiors | shop fitting | office fitting | shelving & racking | materials handling | display stands | bins & crates | notice boards | cupboards & cabinets | mezzanine floor | pallets | lockers architectural systems | screens & partitions  
promotion stands | scaffolding | metal bending | metal perforation | metal powder coating

CAT | ACCESS EQUIPMENT Product: SCAFFOLD | ALUMINIUM STAIRWAY TOWERS

## ALUMINIUM STAIRWAY TOWERS



- Lightweight Aluminium Scaffolding
- Fastest erection & dismantling compared to other scaffolding
- Full handrails on all towers
- Stabilizers on all towers above 4.5m
- Lockable, height adjustable castors on all towers
- Trap-access platforms on all towers
- Safety harness' available
- Bridging platforms up to 7.2m available
- Tower Dimension 1.8m x 1.5m
- Internal staircase & platform on every level
- Platform heights from 2.5m up to 12.5m with stabilizers
- Maximum height 20.5m tied to structure



[www.retief-sales.com](http://www.retief-sales.com)

interiors | shop fitting | office fitting | shelving & racking | materials handling | display stands | bins & crates | notice boards | cupboards & cabinets | mezzanine floor | pallets | lockers architectural systems | screens & partitions promotion stands | scaffolding | metal bending | metal perforation | metal powder coating



CAT | ACCESS EQUIPMENT Product: SCAFFOLD | ALUMINIUM STAIRWAY TOWER

## ALUMINIUM STAIRWAY TOWERS

### TOWER HEIGHT 2.3 M

- Building frames: 2
- Guard rail frames: 2
- Diagonal braces (yellow hook): 1
- Horizontal braces (black hook): 6
- Handrail braces (red hook): 1
- Ladder: 1
- Trapdoor platform: 1
- Plain platform: 1
- Adjustable castors: 4
- Lock braces: L2 & S0
- Toe board sets: 1

### TOWER HEIGHT 4.4 M

- Building frames: 4
- Guard rail frames: 2
- Diagonal braces (yellow hook): 2
- Horizontal braces (black hook): 7
- Handrail braces (red hook): 2
- Ladder: 2
- Trapdoor platform: 1
- Plain platform: 2
- Adjustable castors: 4
- Lock braces: L2 & S2
- Toe board sets: 1

### TOWER HEIGHT 6.5 M

- Building frames: 6
- Guard rail frames: 2
- Diagonal braces (yellow hook): 3
- Horizontal braces (black hook): 8
- Handrail braces (red hook): 3
- Ladder: 3
- Trapdoor platform: 1
- Plain platform: 3
- Adjustable castors: 4
- Triangular stabilizer: 4
- Lock braces: L2 & S4
- Toe board sets: 1

### TOWER HEIGHT 8.6 M

- Building frames: 8
- Guard rail frames: 2
- Diagonal braces (yellow hook): 4
- Horizontal braces (black hook): 9
- Handrail braces (red hook): 4
- Ladder: 4
- Trapdoor platform: 1
- Plain platform: 4
- Adjustable castors: 4
- Triangular stabilizer: 4
- Lock braces: L2 & S6
- Toe board sets: 1

### TOWER HEIGHT 10.7 M

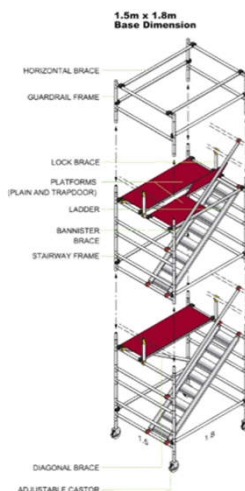
- Building frames: 10
- Guard rail frames: 2
- Diagonal braces (yellow hook): 5
- Horizontal braces (black hook): 10
- Handrail braces (red hook): 5
- Ladder: 5
- Trapdoor platform: 1
- Plain platform: 5
- Adjustable castors: 4
- Triangular stabilizer: 4
- Lock braces: L2 & S8
- Toe board sets: 1

### TOWER HEIGHT 12.8 M

- Building frames: 12
- Guard rail frames: 2
- Diagonal braces (yellow hook): 6
- Horizontal braces (black hook): 11
- Handrail braces (red hook): 6
- Ladder: 6
- Trapdoor platform: 1
- Plain platform: 6
- Adjustable castors: 4
- Triangular stabilizer: 4
- Lock braces: L2 & S10
- Toe board sets: 1

### TOWER HEIGHT 14.9 M

- Building frames: 14
- Guard rail frames: 2
- Diagonal braces (yellow hook): 7
- Horizontal braces (black hook): 12
- Handrail braces (red hook): 7
- Ladder: 7
- Trapdoor platform: 1
- Plain platform: 7
- Adjustable castors: 4
- Triangular stabilizer: 4
- Lock braces: L2 & S12
- Toe board sets: 1



**NOTE:**  
Our sales team will guide you on the options

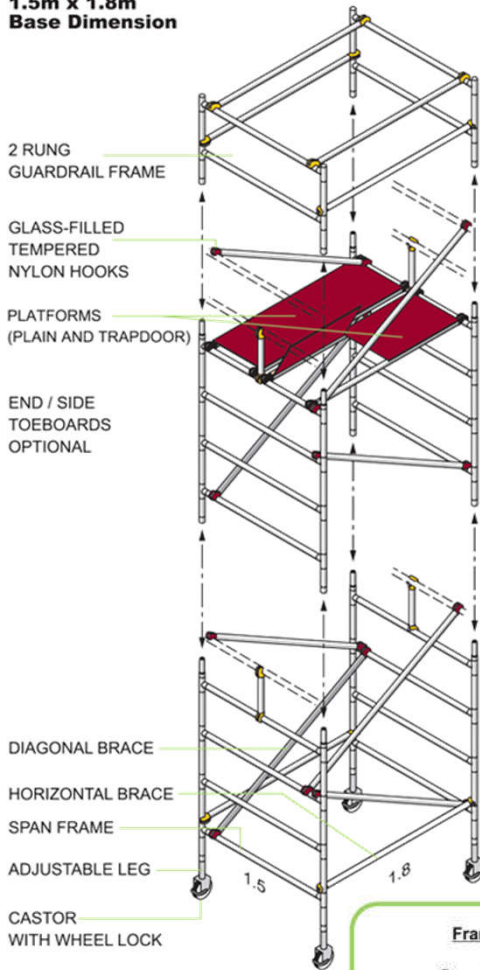
[www.retief-sales.com](http://www.retief-sales.com)

interiors | shop fitting | office fitting | shelving & racking | materials handling | display stands | bins & crates | notice boards | cupboards & cabinets | mezzanine floor | pallets | lockers architectural systems | screens & partitions  
promotion stands | scaffolding | metal bending | metal perforation | metal powder coating

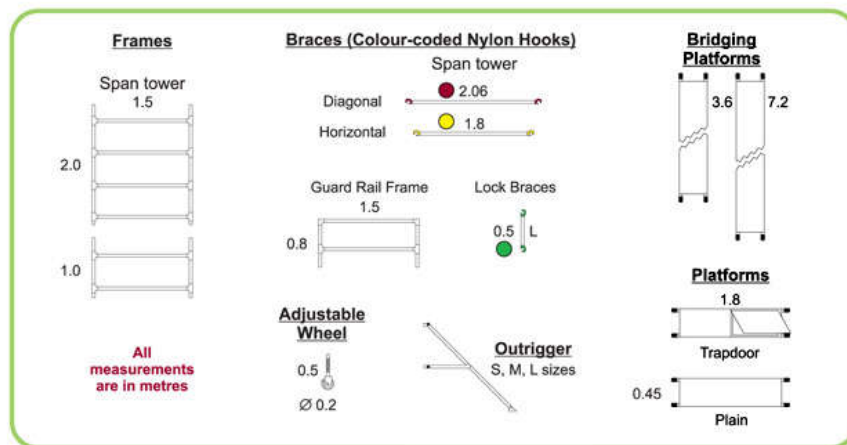
CAT | ACCESS EQUIPMENT Product: SCAFFOLD | ALUMINIUM SPAN TOWERS

## ALUMINIUM SPAN TOWERS

**1.5m x 1.8m  
Base Dimension**



- Lightweight Aluminium Scaffolding
- Fastest erection & dismantling compared to other scaffolding
- Full handrails on all towers
- Stabilizers on all towers above 4.5m
- Lockable, height adjustable castors on all towers
- Trap-access platforms on all towers
- Safety harness' available
- Bridging platforms up to 7.2m available
- Tower Dimension 1.8m x 1.5m
- Platform heights from 2.2m up to 12.2m with stabilizers
- Maximum height 20.2m tied to structure



[www.retief-sales.com](http://www.retief-sales.com)

interiors | shop fitting | office fitting | shelving & racking | materials handling | display stands | bins & crates | notice boards | cupboards & cabinets | mezzanine floor | pallets | lockers architectural systems | screens & partitions promotion stands | scaffolding | metal bending | metal perforation | metal powder coating



CAT | ACCESS EQUIPMENT Product: SCAFFOLD | ALUMINIUM SPAN TOWER

## ALUMINIUM SPAN TOWERS

### TOWER HEIGHT 2.2 M

•Four rung frame:	2
•Two rung frame:	0
•Guard rail frame:	2
•Diagonal braces (red hook):	4
•Horizontal braces (yellow hook):	6
•Plain platform:	1
•Trapdoor platform:	1
•Adjustable castors (200mm):	4
•Lock braces:	L2
•Toe board sets:	1

### TOWER HEIGHT 3.4 M

•Four rung frame:	2
•Two rung frame:	2
•Guard rail frame:	2
•Diagonal braces (red hook):	6
•Horizontal braces (yellow hook):	6
•Plain platform:	1
•Trapdoor platform:	1
•Adjustable castors (200mm):	4
•Lock braces:	L4
•Toe board sets:	1

### TOWER HEIGHT 4.2 M

•Four rung frame:	4
•Two rung frame:	0
•Guard rail frame:	2
•Diagonal braces (red hook):	8
•Horizontal braces (yellow hook):	6
•Plain platform:	2
•Trapdoor platform:	1
•Adjustable castors (200mm):	4
•Lock braces:	L4
•Toe board sets:	1

### TOWER HEIGHT 5.4 M

•Four rung frame:	4
•Two rung frame:	2
•Guard rail frame:	2
•Diagonal braces (red hook):	10
•Horizontal braces (yellow hook):	6
•Plain platform:	2
•Trapdoor platform:	1
•Adjustable castors (200mm):	4
•Lock braces:	L6
•Toe board sets:	1

### TOWER HEIGHT 6.2 M

•Four rung frame:	6
•Two rung frame:	0
•Guard rail frame:	2
•Diagonal braces (red hook):	12
•Horizontal braces (yellow hook):	6
•Plain platform:	3
•Trapdoor platform:	1
•Adjustable castors (200mm):	4
•Triangular stabilizer:	4
•Lock braces:	L6
•Toe board sets:	1

### TOWER HEIGHT 7.4 M

•Four rung frame:	6
•Two rung frame:	2
•Guard rail frame:	2
•Diagonal braces (red hook):	14
•Horizontal braces (yellow hook):	6
•Plain platform:	3
•Trapdoor platform:	1
•Adjustable castors (200mm):	4
•Triangular stabilizer:	4
•Lock braces:	L8
•Toe board sets:	1

### TOWER HEIGHT 8.2 M

•Four rung frame:	8
•Two rung frame:	0
•Guard rail frame:	2
•Diagonal braces (red hook):	16
•Horizontal braces (yellow hook):	6
•Plain platform:	4
•Trapdoor platform:	1
•Adjustable castors (200mm):	4
•Triangular stabilizer:	4
•Lock braces:	L8
•Toe board sets:	1

### TOWER HEIGHT 9.4 M

•Four rung frame:	8
•Two rung frame:	2
•Guard rail frame:	2
•Diagonal braces (red hook):	18
•Horizontal braces (yellow hook):	6
•Plain platform:	4
•Trapdoor platform:	1
•Adjustable castors (200mm):	4
•Triangular stabilizer:	4
•Lock braces:	L10
•Toe board sets:	1

### TOWER HEIGHT 10.2 M

•Four rung frame:	10
•Two rung frame:	0
•Guard rail frame:	2
•Diagonal braces (red hook):	20
•Horizontal braces (yellow hook):	6
•Plain platform:	5
•Trapdoor platform:	1
•Adjustable castors (200mm):	4
•Triangular stabilizer:	4
•Lock braces:	L10
•Toe board sets:	1

[www.retief-sales.com](http://www.retief-sales.com)

interiors | shop fitting | office fitting | shelving & racking | materials handling | display stands | bins & crates | notice boards | cupboards & cabinets | mezzanine floor | pallets | lockers architectural systems | screens & partitions promotion stands | scaffolding | metal bending | metal perforation | metal powder coating

CAT | ACCESS EQUIPMENT Product: SCAFFOLD | ALUMINIUM SPAN TOWER

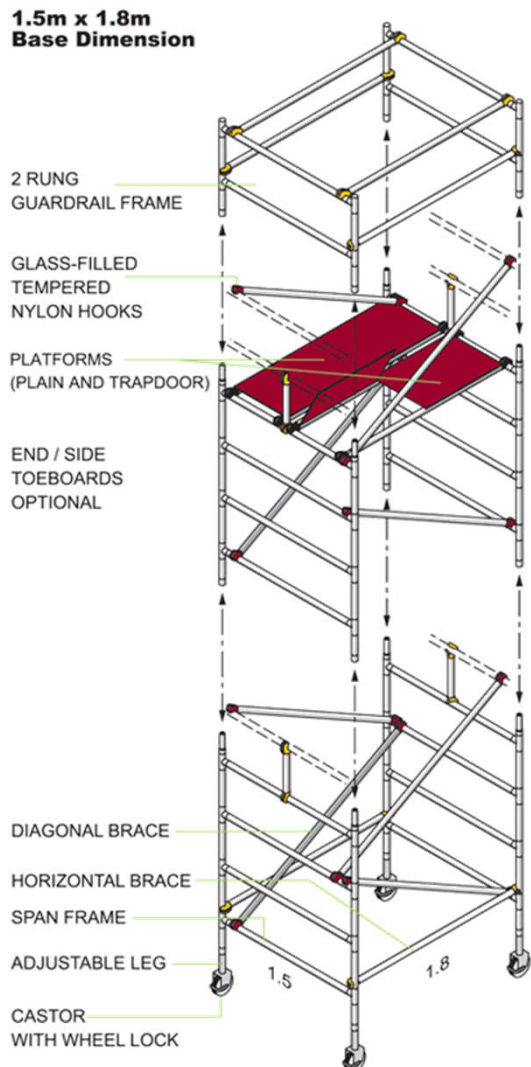
## ALUMINIUM SPAN TOWERS

### TOWER HEIGHT 11.4 M

- Four rung frame: 10
- Two rung frame: 2
- Guard rail frame: 2
- Diagonal braces (red hook): 22
- Horizontal braces (yellow hook): 6
- Plain platform: 5
- Trapdoor platform: 1
- Adjustable castors (200mm): 4
- Triangular stabilizer: 4
- Lock braces: L12
- Toe board sets: 1

### TOWER HEIGHT 12.2 M

- Four rung frame: 12
- Two rung frame: 0
- Guard rail frame: 2
- Diagonal braces (red hook): 24
- Horizontal braces (yellow hook): 6
- Plain platform: 6
- Trapdoor platform: 1
- Adjustable castors (200mm): 4
- Triangular stabilizer: 4
- Lock braces: L12
- Toe board sets: 1



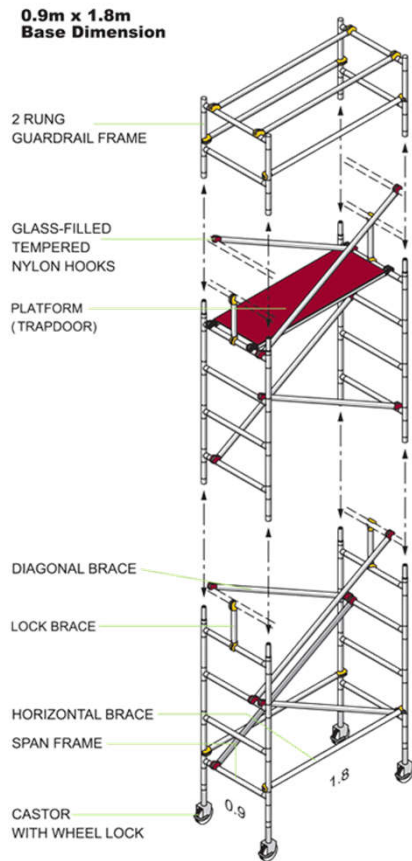
[www.retief-sales.com](http://www.retief-sales.com)

interiors | shop fitting | office fitting | shelving & racking | materials handling | display stands | bins & crates | notice boards | cupboards & cabinets | mezzanine floor | pallets | lockers architectural systems | screens & partitions promotion stands | scaffolding | metal bending | metal perforation | metal powder coating

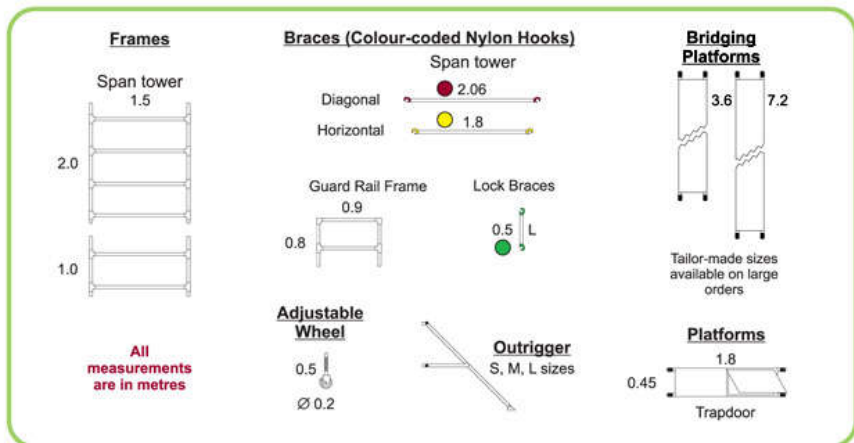


CAT | ACCESS EQUIPMENT Product: SCAFFOLD | ALUMINIUM NARROW SPAN TOWER

## ALUMINIUM NARROW SPAN TOWERS



- Lightweight Aluminium Scaffolding
- Fastest erection & dismantling compared to other scaffolding
- Full handrails on all towers
- Stabilizers on all towers above 4.5m
- Lockable, height adjustable castors on all towers
- Trap-access platforms on all towers
- Safety harness' available
- Bridging platforms up to 7.2m available
- Tower dimension 1.8m x 0.9m
- Platform heights from 2.2m up to 8.2m with stabilizers
- Max height 8.2m tied to structure



[www.retief-sales.com](http://www.retief-sales.com)

interiors | shop fitting | office fitting | shelving & racking | materials handling | display stands | bins & crates | notice boards | cupboards & cabinets | mezzanine floor | pallets | lockers architectural systems | screens & partitions promotion stands | scaffolding | metal bending | metal perforation | metal powder coating

CAT | ACCESS EQUIPMENT Product: SCAFFOLD | ALUMINIUM NARROW SPAN TOWER

## ALUMINIUM NARROW SPAN TOWERS

### TOWER HEIGHT 2.2 M

•Four rung frame:	2
•Two rung frame:	0
•Guard rail frame:	2
•Diagonal braces (red hook):	4
•Horizontal braces (yellow hook):	6
•Plain platform:	1
•Trapdoor platform:	1
•Adjustable castors (200mm):	4
•Lock braces:	L2
•Toe board sets:	1

### TOWER HEIGHT 3.4 M

•Four Rung Frame:	2
•Two Rung Frame:	2
•Guard Rail Frame:	2
•Diagonal Braces (red hook):	6
•Horizontal Braces (yellow hook):	6
•Trapdoor Platform:	1
•Triangular Stabilizer:	4
•Adjustable Castors (200mm):	4
•Lock Braces:	L4
•Toe Board Sets:	1

### TOWER HEIGHT 4.2 M

•Four Rung Frame:	4
•Two Rung Frame:	0
•Guard Rail Frame:	2
•Diagonal Braces (red hook):	8
•Horizontal Braces (yellow hook):	6
•Trapdoor Platform:	2
•Triangular Stabilizer:	4
•Adjustable Castors (200mm):	4
•Lock Braces:	L4
•Toe Board Sets:	1

### TOWER HEIGHT 5.4 M

•Four Rung Frame:	4
•Two Rung Frame:	2
•Guard Rail Frame:	2
•Diagonal Braces (red hook):	10
•Horizontal Braces (yellow hook):	6
•Trapdoor Platform:	2
•Triangular Stabilizer:	4
•Adjustable Castors (200mm):	4
•Lock Braces:	L6
•Toe Board Sets:	1

### TOWER HEIGHT 6.2 M

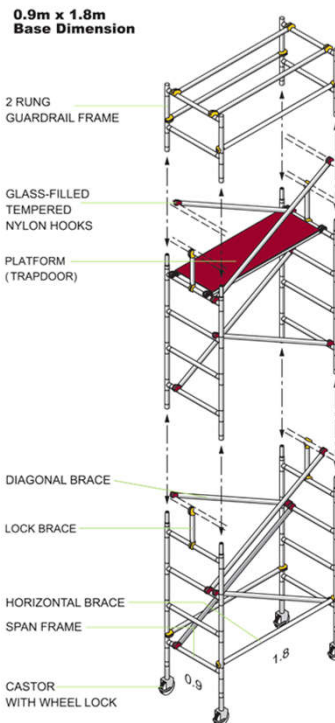
•Four Rung Frame:	6
•Two Rung Frame:	0
•Guard Rail Frame:	2
•Diagonal Braces (red hook):	12
•Horizontal Braces (yellow hook):	6
•Trapdoor Platform:	3
•Triangular Stabilizer:	4
•Adjustable Castors (200mm):	4
•Lock Braces:	L6
•Toe Board Sets:	1

### TOWER HEIGHT 7.4 M

•Four Rung Frame:	6
•Two Rung Frame:	2
•Guard Rail Frame:	2
•Diagonal Braces (red hook):	14
•Horizontal Braces (yellow hook):	6
•Trapdoor Platform:	3
•Triangular Stabilizer:	4
•Adjustable Castors (200mm):	4
•Lock Braces:	L8
•Toe Board Sets:	1

### TOWER HEIGHT 8.2 M

•Four Rung Frame:	8
•Two Rung Frame:	0
•Guard Rail Frame:	2
•Diagonal Braces (red hook):	16
•Horizontal Braces (yellow hook):	6
•Trapdoor Platform:	4
•Triangular Stabilizer:	4
•Adjustable Castors (200mm):	4
•Lock Braces:	L8
•Toe Board Sets:	1



[www.retief-sales.com](http://www.retief-sales.com)

interiors | shop fitting | office fitting | shelving & racking | materials handling | display stands | bins & crates | notice boards | cupboards & cabinets | mezzanine floor | pallets | lockers architectural systems | screens & partitions  
promotion stands | scaffolding | metal bending | metal perforation | metal powder coating